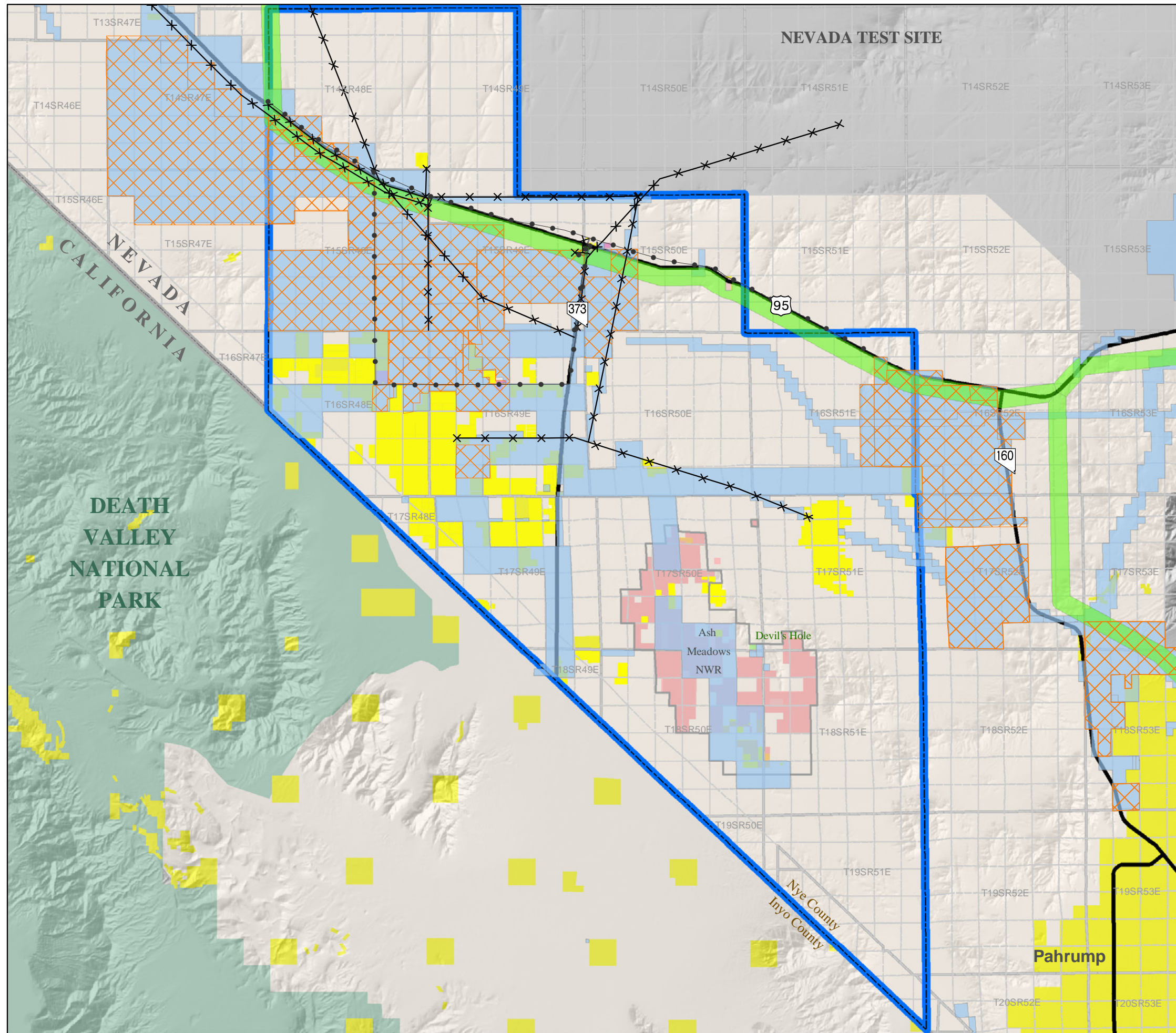


AMARGOSA VALLEY, NEVADA AREA PLAN

Map 10 Energy Development



BLM RIGHT-OF-WAYS

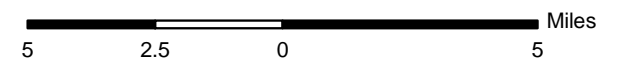
- Telephone and Telegraph
- ×—× Transmission Line
- Power ROW
- Pending Solar ROW Applications
- Proposed Energy Corridor on Federal Lands

LANDOWNER

- Bureau of Land Management
- County
- Department of Energy
- National Park Service
- State Lands
- Private
- U.S. Fish and Wildlife Service
- Amargosa Valley Town Boundary

SOURCES:
 Telephone, Telegraph and Transmission Line Right-of-Ways from BLM. Pending BLM solar ROW Applications from BEC, Inc. Power ROWs from BLM GeoCommunicator on 5/27/09. Note: In some areas, Power ROWs do not show the actual extent of the ROW, but rather the PLSS Section in which the ROW is present. Areas proposed (per the requirements of Section 368 of the Energy Policy Act of 2005) as West-wide energy corridors for the final "Programmatic Environmental Impact Statement, Designation of Energy Corridors on Federal Land in the 11 Western States", November 2008 downloaded from the West-Wide Energy Corridor Programmatic EIS Information Center on 12/09/08.

Land Ownership from BLM Land Ownership dataset (2007). Road centerlines and Amargosa Valley Town boundary from the Nye County GIS Repository (2008).



This information is for display purposes only. No liability is assumed as to the accuracy of the data delineated herein. Map prepared on 6/8/09 - TSG-09033.2