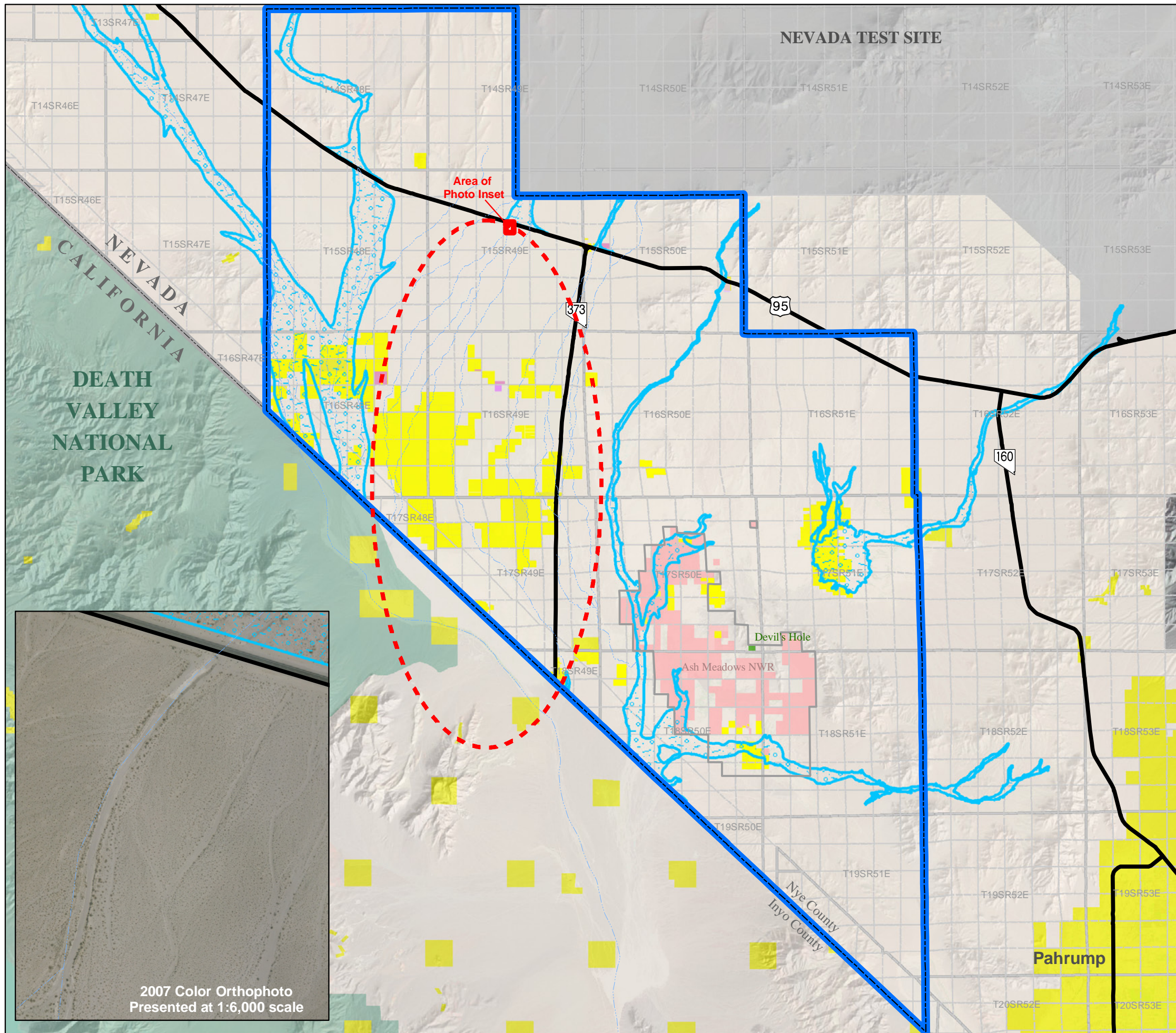


AMARGOSA VALLEY, NEVADA AREA PLAN

Map 9 Floodplain Protection



- FEMA FIRM Floodprone Areas
- Drainages
- Possible Area of Incomplete Floodprone Mapping

LANDOWNER

- Bureau of Land Management
- County
- Department of Energy
- National Park Service
- State Lands
- Private
- U.S. Fish and Wildlife Service

Amargosa Valley Town Boundary

SOURCES:
Floodprone areas were automated from georeferenced scans of Federal Emergency Management Administration (FEMA) Flood Insurance Rate Map (FIRM) Panels of S. Nye County (September 28, 1990). It appears the central portion of Amargosa Valley was not completely mapped, with drainages from Fortymile Wash and Topopah Wash ending on the north side of US 95.

Land Ownership from BLM Land Ownership dataset (2007). Road centerlines and Amargosa Valley Town boundary from the Nye County GIS Repository (2008).



This information is for display purposes only.
No liability is assumed as to the accuracy of the data delineated herein.
Map updated on 6/8/09 - TSG-09032.2

2007 Color Orthophoto
Presented at 1:6,000 scale